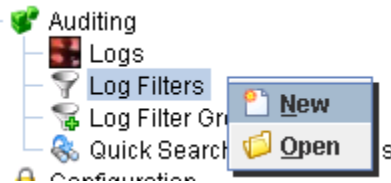


# Creating Log Filters and Log Filter Groups

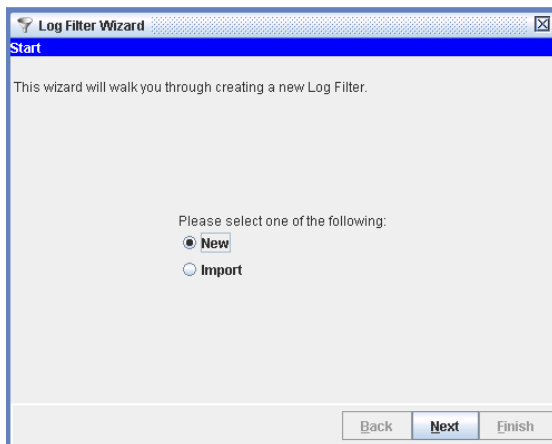
## 1 LOG FILTERS

---

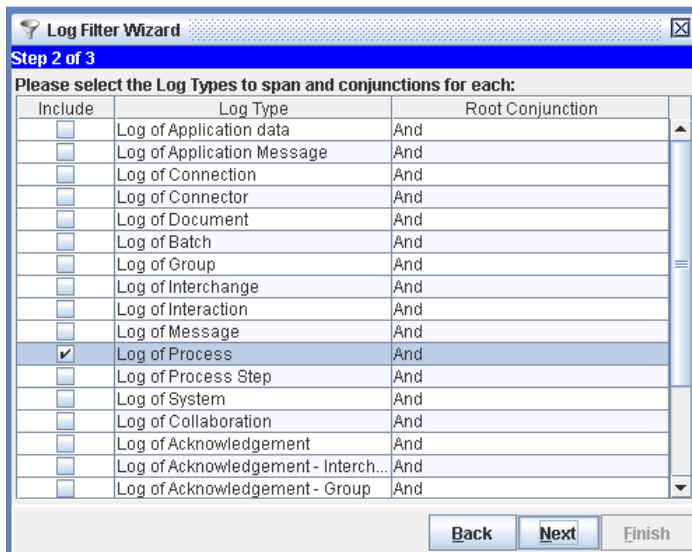
First the EBI user will want to double-click on **Log Filters** to open the Log Filter tab in the Workbench. Next they will right-click and select **New**.



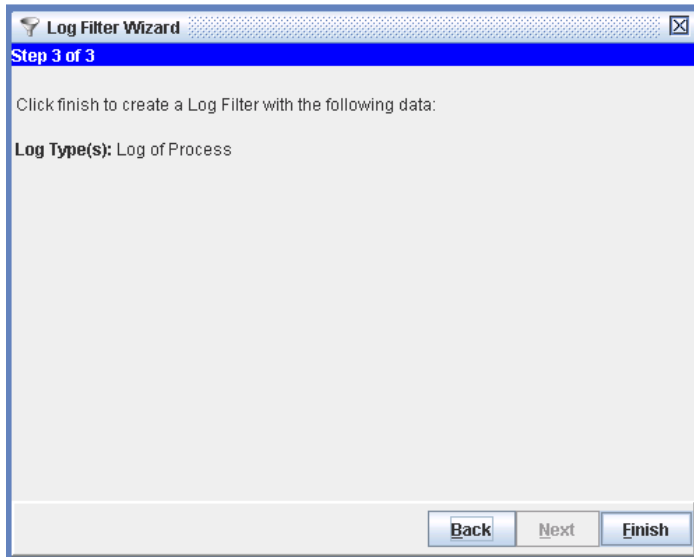
Once the EBI user has done that the **Log Filter Wizard** box will appear. Select **New** and hit **Next**.



On the next screen, the EBI user will be able to select what they want to filter on. For this example, we will filter on **Log of Process**. Check that box and hit **Next**.



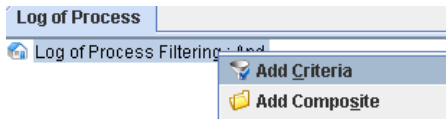
On the third and final step it will list the log types that were selected. Click **Finish**.



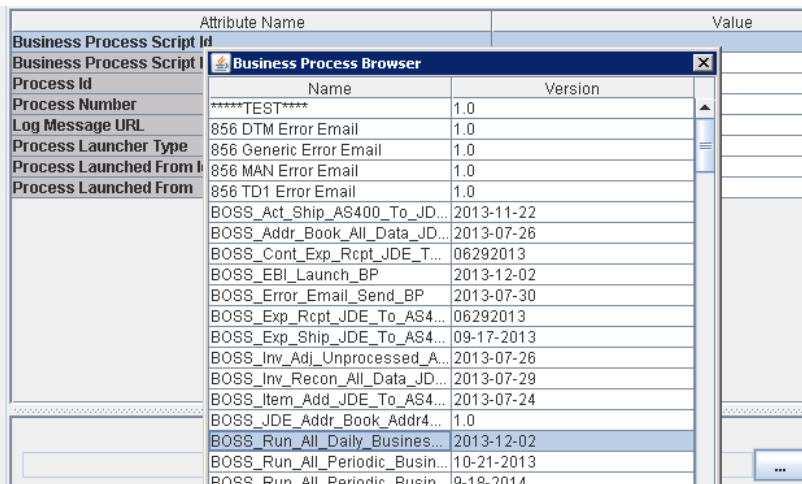
Now the **Log Filter Editor** will appear. On this screen the example that will be used is a filter for the Business Process **BOSS\_Run\_All\_Periodic\_Business\_Processes**.

With Log Filters you can specify many different specifications as to what the EBI user wants to filter on. For now we are just filtering on the Business Process.

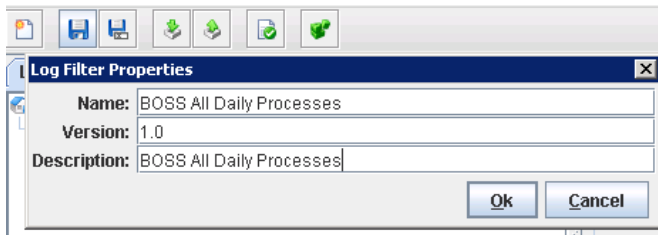
Right-click on the Log of Process Filtering and select **Add Criteria**.



Once that is selected the EBI user can select the Business Process they want to filter on by highlighting **Business Process Script Id**. Now towards the bottom click the ... Box and select the Business Process **BOSS\_Run\_All\_Periodic\_Business\_Processes**.



Once that is selected the EBI user can hit **Save** and enter their property info. Now hit **Ok**.



There are plenty of different criteria an EBI user can use to make their Log Filters.

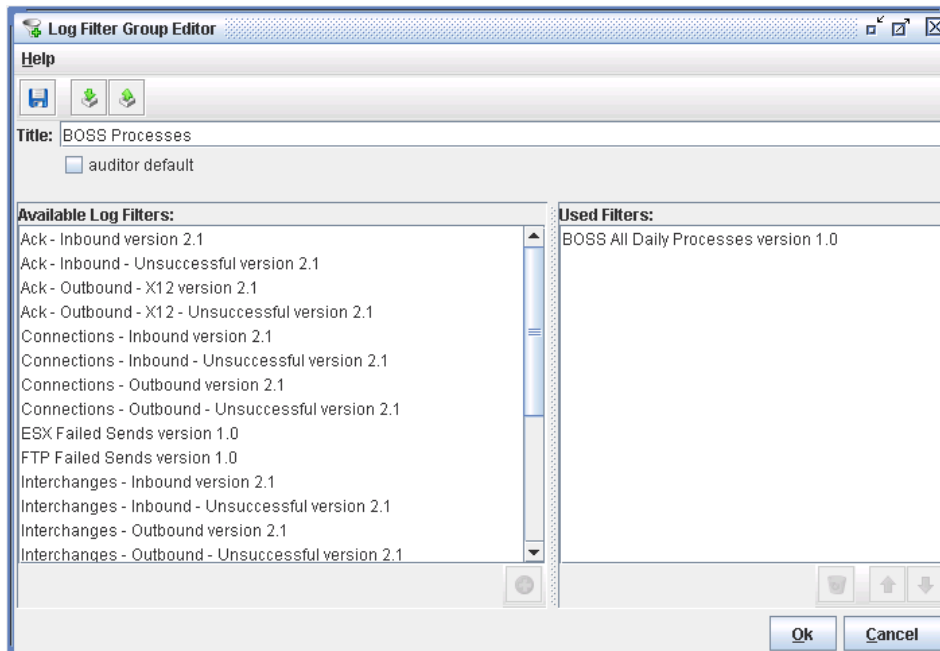
## 2 LOG FILTER GROUP

Next the EBI user will want to double-click on **Log Filter Groups** to open that tab up in the Workbench. Then they will right-click and select **New**.



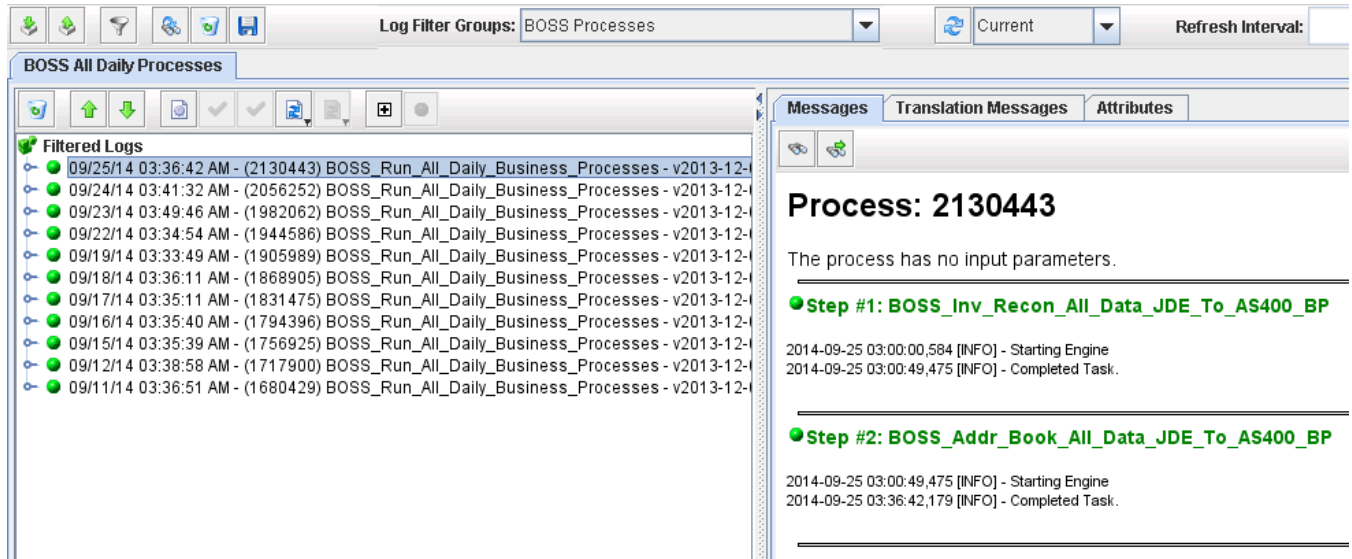
Now we are going to create a group for the BOSS Processes. More processes can be added in at any time, but for now in this example we are just using the **BOSS\_Run\_All\_Periodic\_Business\_Processes** Business Process.

In the Available Log Filter list, select the **Log Filter** that we created, **BOSS All Daily Processes**. It will move over to the Used Filters side. Now just enter a title for the Log Filter Group and click **Ok**.



### 3 THE AUDITOR

Now if the EBI user moves over to the Auditor. In the Log Filter Groups drop down there is a selection for **BOSS Processes**. Now only the **BOSS\_Run\_All\_Daily\_Business\_Processes** Business Process will show for the Log Filter we created. It shows as a tab along the top.



More tabs can be added by creating new **Log Filters** and adding them to the **Used Filters** section of the **Log Filter Group**.

A good practice is to keep Trading Partners and similar processes together. For this example we would make a tab for each different BOSS process in this **Log Filter Group**.